

This property is marketed by



Gravel Springs Road & Mall of Georgia Blvd.

Gwinnett County

PROPERTY SUMMARY

Description: This property is located on Gravel Springs Road at the intersection of the Mall of Georgia Blvd. Original acreage was 32 acres; however, the back section of the property has been sold for a town home development. Two separate pads are remaining: one which contains 6.3 acres, and the other containing 4.6 acres. This is an excellent retail location at the Mall of Georgia where few lots remain for sale.

Price: \$550,000/acre

Acreage: Site #1: 6.3 acres
Site #2: 4.6 acres

Zoning: A-1

Topography: Level

Utilities: All available

	<u>3 Mile Radius</u>	<u>5-Mile Radius</u>	<u>10-Mile Radius</u>
2004 Population:	26,570	88,651	314,358
% change in population 00-2004:	16.85%	15.49%	22.6%
2004 Average Household Income:	\$80,641	\$79,032	\$80,844

For more information contact:

Greg Sport

Trivest Real Estate, LLC

191 Peachtree Street, Suite 3300

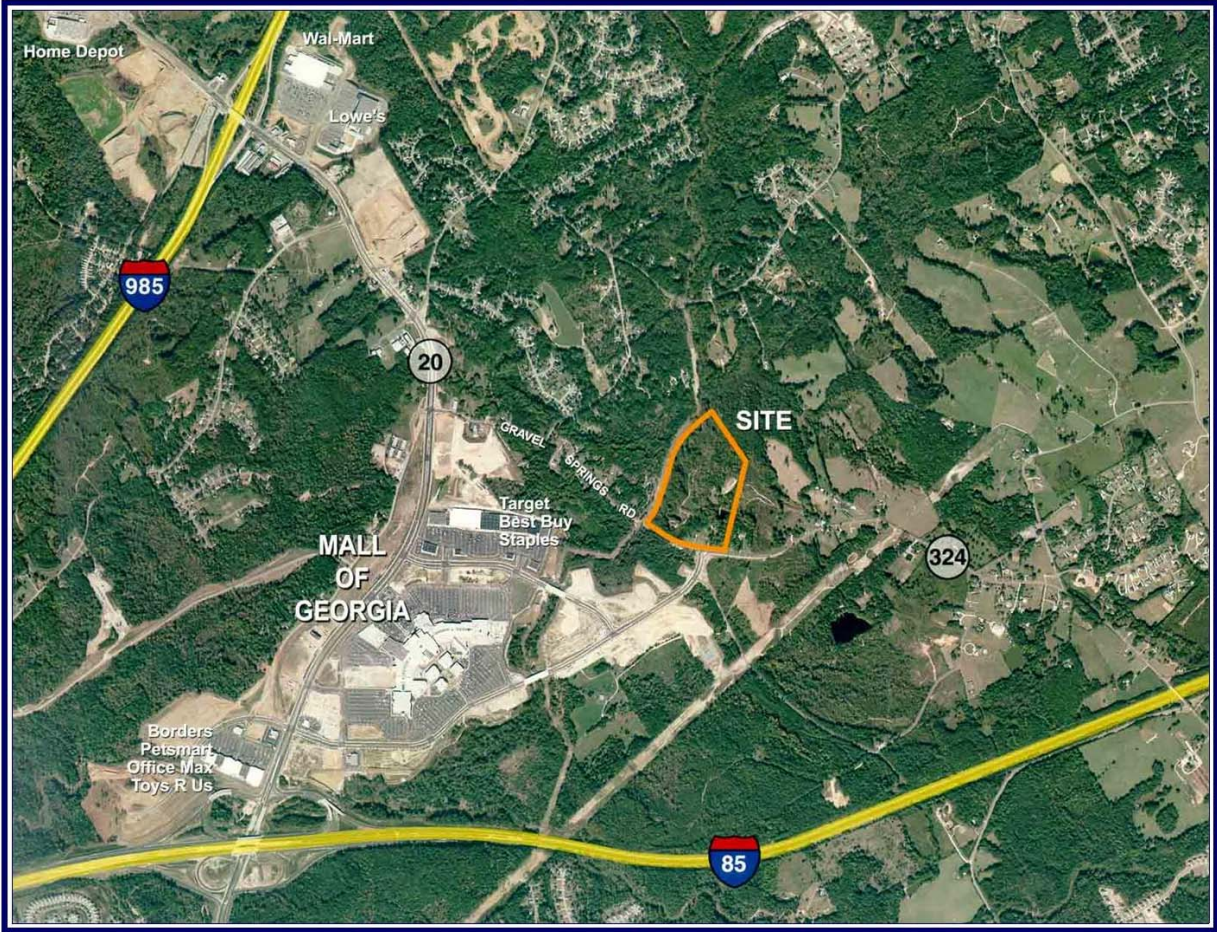
Atlanta, GA 30303

Phone: 404-736-3711 • Fax: 404-736-3715 • E-mail: gsport@trivestusa.com

This property is marketed by



Aerial Photo



This property is marketed by



Site Plan

